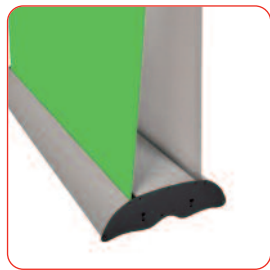


Original Banner 3



features & benefits

- Choice of 6 widths, from 600mm to 2000mm
- Increased internal housing for thicker graphics (up to 450 microns/gsm banner vinyl)
- Quick-change graphic release
- Quick-change universal rail
- Available in anodised silver or black powdercoated finish
- Bungee pole



Slide-in Graphic

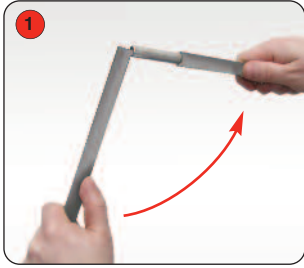
hardware specifications	graphic specifications	additional info
<p>800mm Hardware Dimensions (mm): 2245 max (h) x 818 (w) x 265 (d) approx. 84.45" (h) x 32.2" (w) x 10.43" (d) approx.</p> <p>Base Dimensions (mm): 84 (h) x 818 (w) x 265 (d) approx. 3.31" (h) x 32.2" (w) x 10.43" (d) approx.</p> <p>Weight: 4kg (9.92lbs) approx (including carry bag)</p>	<p>Please refer to Graphic Template</p>	<p>Included in kit: Base, top rail, bungee pole and carry bag</p> <p>Please note that if the banner is over 1100mm wide it will be supplied with 2 poles.</p>

REV 6 05/11

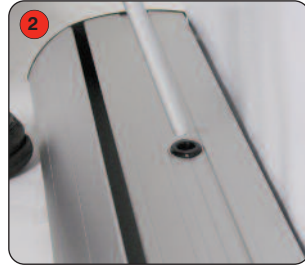
We are continually improving and modifying our product range and reserve the right to vary the specifications without prior notice. All dimensions and weights quoted are approximate and we accept no responsibility for variance. E&OE.

Assembly Instructions

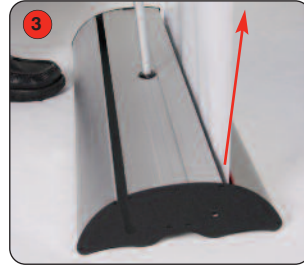
Banner stand assembly



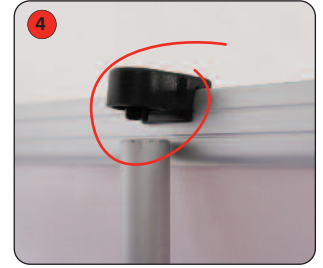
Open up the bungee pole until all 3 parts are fitted securely together.



Slot the pole into the hole on the base and push down to secure fit.

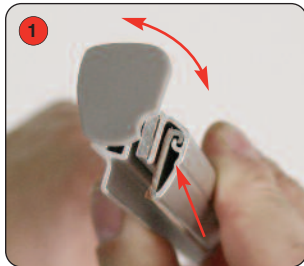


Pull graphic out of unit and tilt back to reach the top of the pole.

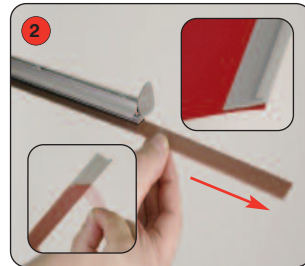


Fit pole into the top rail fixing.

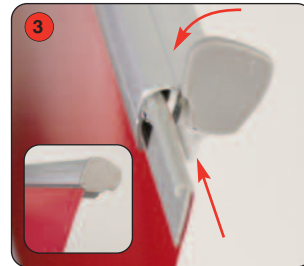
Graphic attachment - Adhesive rail option



Rotate the rail end cap to expose the plastic adhesive rail insert.



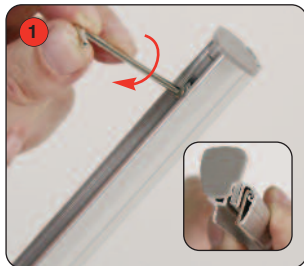
Slide the rail insert from the top rail. Adhere the insert to the **front** of the graphic.



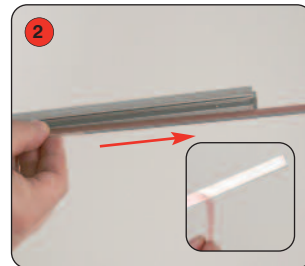
Slide the rail insert and graphic into the top rail. Close the rail end cap.

Important: Hold the top rail whilst lowering the banner to prevent damage to the graphic. (do not drop)

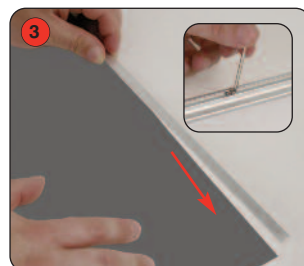
Graphic attachment - Grippa rail option (ideal for textiles and PVC)



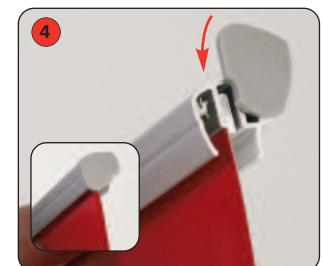
Using the Allen key supplied with the user instructions, loosen the top rail screws. Rotate the rail end cap to expose the steel flat bar.



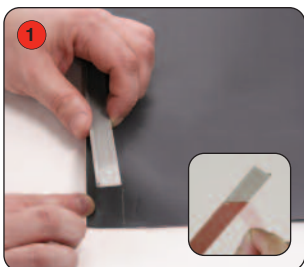
Slide the flat bar from the top rail and remove the backing paper.



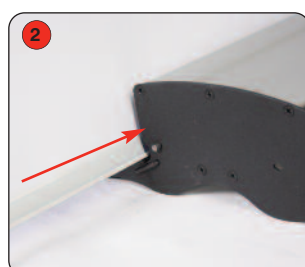
Adhere the flat bar to the **back** of the graphic. Slide the flat bar and graphic into the top rail. Tighten the screws to secure the top rail. Close the rail end cap.



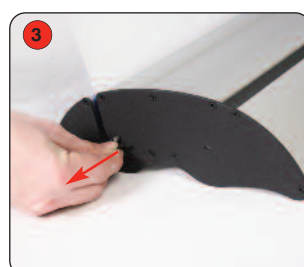
Graphic attachment - Base



Adhere the insert to the **back** of the graphic.



Slide the insert and graphic into the base.



Whilst holding the graphic, remove the locking pin from the base and gently allow the graphic to retract.

WARNING: Always attach graphic to base and top rail before removing the locking pin.

After fitting, the graphic should be left for 24 hours before use to ensure the adhesive bonds sufficiently. Opening the cassette may invalidate the product warranty.